

# BRASS!

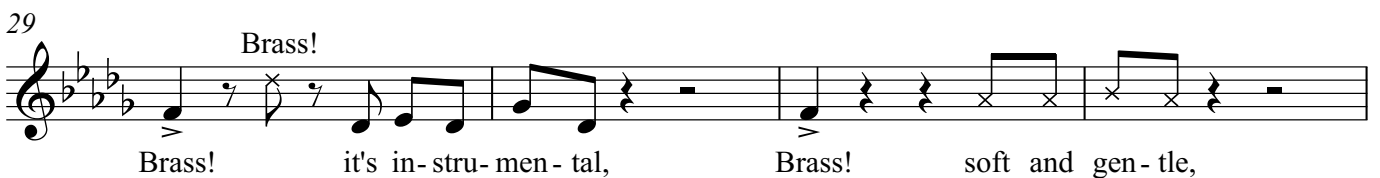
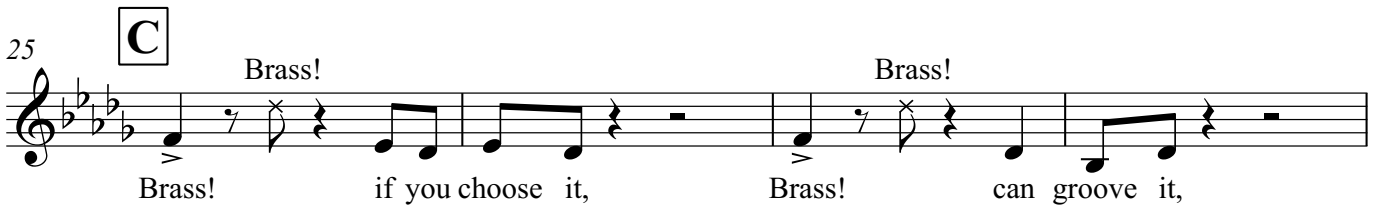
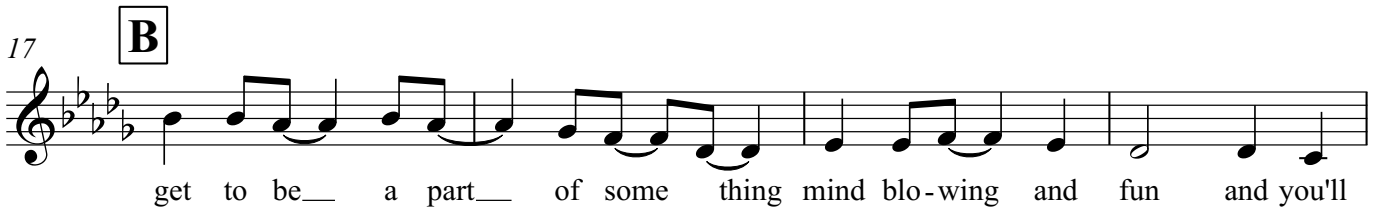
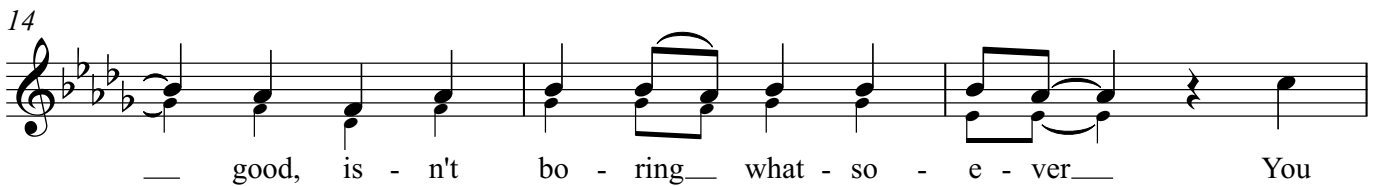
BBE/Brass Foundations

♩=132 With a medium swing  
8

**A**



You can learn to do some-thing\_ that's  
*mf*





73 **I**

in it means being on it. Being with it and get-ting lots  
 Being in it means being

76

from it. Being right in the mid-dle gi-ving it some class, being  
 on it. Being with it and get - ting lots from it. Being  
 Being in it means being on it. Being

79

right in the mid - dle gi - ving it some class, being  
 right in the mid - dle giv - ing it some class, Being  
 with it and get - ting lots from it. class, Being

81

right in the mid-dle gi-ving it some class, A-cing life and play - ing  
 right in the mid - dle giv - ing it some class, A - cing life and play - ing  
 right in the mid - dle giv - ing it some class, A - cing life and play - ing

85 **J**

Brass! Brass!

Brass! if you choose it, Brass! can groove it,

Detailed description: This block contains the first musical staff, starting at measure 85. It features a treble clef and a key signature of three flats (B-flat, E-flat, A-flat). The staff contains two measures of music. The first measure has a 'Brass!' instruction above and below the staff, with a down-bow or breath mark above the first note. The lyrics 'if you choose it,' are written below the staff. The second measure also has a 'Brass!' instruction above and below, with a down-bow or breath mark above the first note. The lyrics 'can groove it,' are written below the staff.

89

Brass! Brass!

Brass! it's in-stru-men-tal, Brass! soft and gen-tle,

Detailed description: This block contains the second musical staff, starting at measure 89. It features a treble clef and a key signature of three flats. The staff contains two measures of music. The first measure has a 'Brass!' instruction above and below, with a down-bow or breath mark above the first note. The lyrics 'it's in-stru-men-tal,' are written below the staff. The second measure also has a 'Brass!' instruction above and below, with a down-bow or breath mark above the first note. The lyrics 'soft and gen-tle,' are written below the staff.

93 **K**

Brass! Brass!

Brass! will pow-er through it, Brass! can jazz and blues it,

Detailed description: This block contains the third musical staff, starting at measure 93. It features a treble clef and a key signature of three flats. The staff contains two measures of music. The first measure has a 'Brass!' instruction above and below, with a down-bow or breath mark above the first note. The lyrics 'will pow-er through it,' are written below the staff. The second measure also has a 'Brass!' instruction above and below, with a down-bow or breath mark above the first note. The lyrics 'can jazz and blues it,' are written below the staff.

97

Brass! Brass!

Brass! march to it, Brass! you can do it!

Detailed description: This block contains the fourth musical staff, starting at measure 97. It features a treble clef and a key signature of three flats. The staff contains two measures of music. The first measure has a 'Brass!' instruction above and below, with a down-bow or breath mark above the first note. The lyrics 'march to it,' are written below the staff. The second measure also has a 'Brass!' instruction above and below, with a down-bow or breath mark above the first note. The lyrics 'you can do it!' are written below the staff.